

HOLLARD STABLE FUND*



*Comprises Blue Ink Vesting Trust No 37, Caveo Stable Portfolio Trust, The Novare Capricorn Hollard Hedge Fund en commandite partnership and Silver Cluster Loan Stock Company (Proprietary) Ltd.

OBJECTIVE

The Hollard Stable Fund is a South African long/short equity hedge fund. The Fund has a strong focus on capital preservation, targeting an absolute return in excess of cash. The conservative, counter-cyclical nature of the fund could result in underperformance during equity bull markets, whilst outperforming in equity bear markets.

	Current NAV	1 month %	6 month %	1 year %	3 year %	Annualised since launch	Since launch %
HSF	R 1,736m	5.5%	15.1%	18.4%	64.2%	16.6%	566.4%

MANAGER'S COMMENTS



October proved to be a pleasing month for the Fund, returning 5.5% in a strong month for the market. What is most gratifying is how the fund participated substantially in the recent rally given how well they performed through the weaker months prior. Our portfolio does not look to predict how the market will perform over the short-term and is well balanced to absorb these volatile markets.

Performance was dominated by our core long-book given the strong rally in the market. Positions such as Naspers, Reinet, Discovery and Brait were notable for the Fund. We continue to invest in these businesses that illustrate competitive advantage and can deliver superior long-term returns.

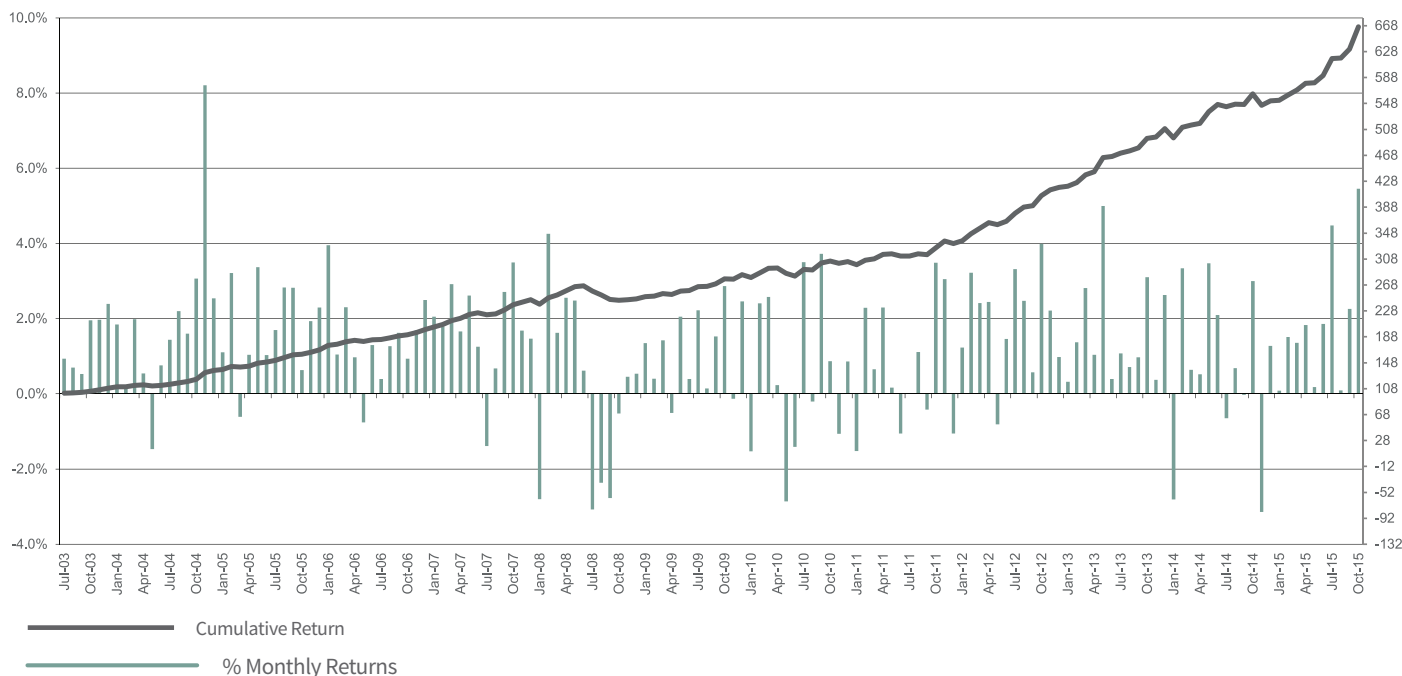
Ironically the real driver of relative performance this month was our short book. This was delivered from the bulk of our short book not rallying significantly as well as positive performance being delivered out of shorts in the South African property space as well as some select resource names. In addition, a stock specific issue in a mid-cap short of ours continued its downward movement for the second month now after much weaker results, and contributed strongly during the month.

As we near year-end, we remain positioned in a cautious manner with a well balanced portfolio that we believe will serve investors well in most environments.

HOLLARD STABLE FUND CONTINUED



Historical Monthly Returns

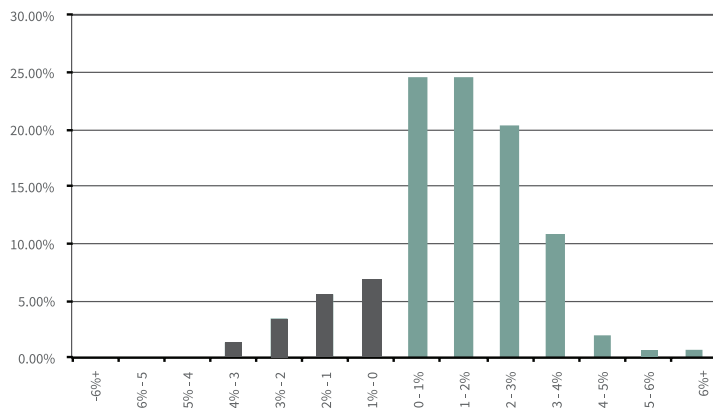


	Jan	Feb	Mar	Apr	May	Jun	Jul	Aug	Sep	Oct	Nov	Dec	YTD
2003							0.9%	0.7%	0.5%	2.0%	2.0%	2.4%	8.8%
2004	1.8%	0.2%	2.0%	0.5%	(1.5%)	0.8%	1.4%	2.2%	1.6%	3.1%	8.2%	2.5%	25.1%
2005	1.1%	3.2%	(0.6%)	1.0%	3.4%	1.0%	1.7%	2.8%	2.8%	0.6%	1.9%	2.3%	23.5%
2006	4.0%	1.1%	2.3%	1.0%	(0.8%)	1.3%	0.4%	1.3%	1.6%	0.9%	1.7%	2.5%	18.6%
2007	2.1%	1.8%	2.9%	1.7%	2.6%	1.3%	(1.4%)	0.7%	2.7%	3.5%	1.7%	1.5%	23.0%
2008	(2.8%)	4.3%	1.6%	2.6%	2.5%	0.6%	(3.1%)	(2.4%)	(2.8%)	(0.5%)	0.5%	0.5%	0.7%
2009	1.3%	0.4%	1.4%	(0.5%)	2.1%	0.4%	2.2%	0.1%	1.5%	2.9%	(0.1%)	2.5%	15.7%
2010	(1.5%)	2.4%	2.6%	0.2%	(2.9%)	(1.4%)	3.5%	(0.2%)	3.7%	0.9%	(1.1%)	0.9%	7.1%
2011	(1.5%)	2.3%	0.7%	2.3%	0.2%	(1.1%)	0.0%	1.1%	(0.4%)	3.5%	3.1%	(1.1%)	9.2%
2012	1.2%	3.2%	2.4%	2.4%	(0.8%)	1.5%	3.3%	2.5%	0.6%	4.0%	2.2%	1.0%	26.1%
2013	0.3%	1.4%	2.8%	1.0%	5.0%	0.4%	1.1%	0.7%	1.0%	3.1%	0.4%	2.6%	21.6%
2014	(2.8%)	3.3%	0.6%	0.5%	3.5%	2.1%	(0.7%)	0.7%	(0.0%)	3.0%	(3.1%)	1.3%	8.5%
2015	0.1%	1.5%	1.4%	1.8%	0.2%	1.9%	4.5%	0.1%	2.3%	5.5%			20.7%

HOLLARD STABLE FUND CONTINUED



Frequency distribution of Returns



Statistics

Assets Under Management (R Million)	R1,736m
Gross exposure	176%
Net Exposure	45%
% of positive months	83%
% of negative months	17%
Average positive monthly return	1.9%
Average negative monthly return	(1.4%)
Annualised monthly volatility (historic)	6.0%
Sharpe Ratio	1.5
Maximum monthly drawdown	(3.1%)
Maximum cumulative drawdown	(8.5%)

Important Information

Past performance is no guarantee of future returns - values can go up and down. The information contained above has been prepared by Capricorn Fund Managers (Pty) Limited and is unaudited. Returns as shown are the weighted average of all issued series.

CONTACT INFORMATION

Investment Manager

Capricorn Fund Managers (Pty) Limited
 Capricorn House
 32 Impala Rd
 Chislehurst
 2196
 South Africa

For enquiries please contact

Andrew Crawford
 T: +27 11 666 0716
 E: andrewc@capricornsa.com

Licensed by the Financial Services Board
 License number: 863