

HOLLARD STABLE FUND



OBJECTIVE

The Hollard Stable Fund is a South African long/short equity hedge fund. The fund has a strong focus on capital preservation, targeting an absolute return in excess of cash. The conservative, counter-cyclical nature of the fund could result in underperformance during equity bull markets, whilst outperforming in equity bear markets.

	Current NAV	1 month %	6 month %	1 year %	3 year %	Annualised since launch	Since launch %
HSF	R 1,293m	0.7%	6.9%	15.2%	73.0%	16.4%	446.7%

MANAGER'S COMMENTS



The fund turned in a pleasing positive performance for August of 0.7% while the JSE All Share index lost 0.46%. World markets appear to have found some stability albeit in the face of extraordinary geopolitical events. We remain cautious on the South African economy and continue to favour companies with significant offshore exposure.

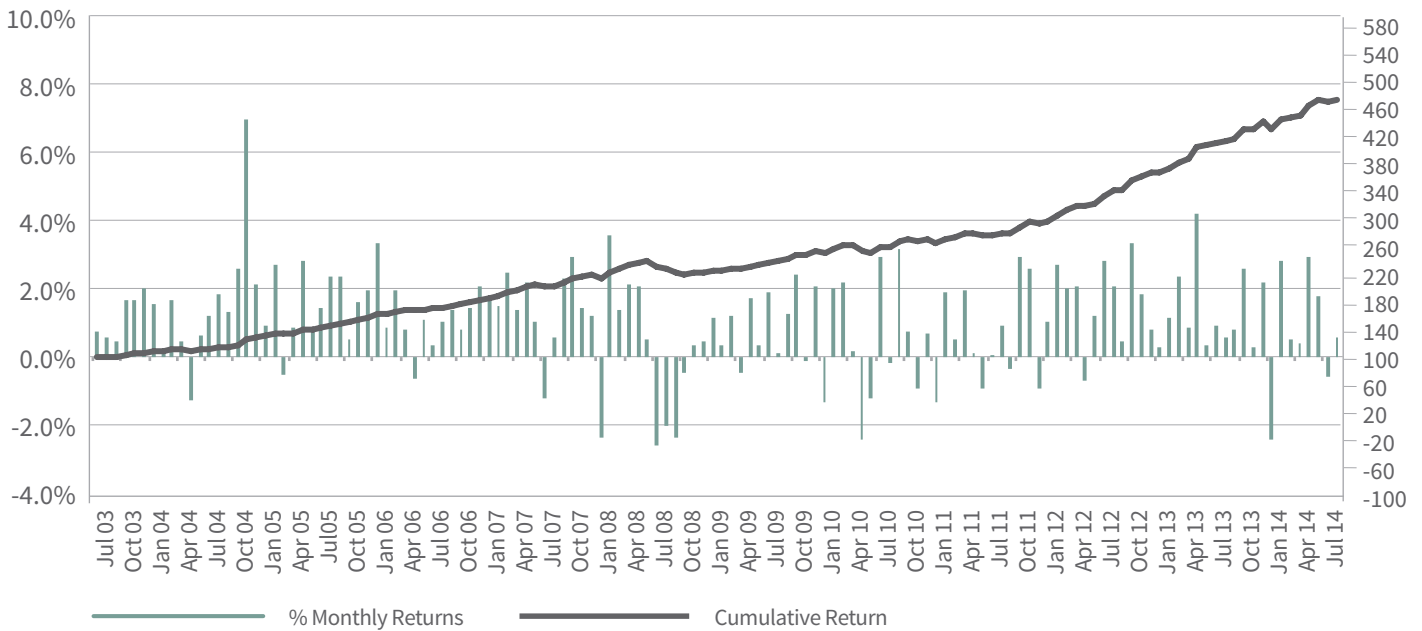
The star performer for the month was Rockcastle Global Real Estate, a recent addition to the fund. This company represents the Resilient Property Group's latest endeavour into international markets, and given their success with Nepi we continue to see significant upside in the name. In addition, long-held positions in Brait, Netcare and Discovery contributed strongly to profits.

Shoprite continued to disappoint reflecting the pressure on consumers in South Africa. Our book is net short of the South African retail sector, so we benefit on the downside, however we have held a core long in Shoprite looking for the wider African story in this business to dominate.

HOLLARD STABLE FUND CONTINUED



Historical Monthly Returns

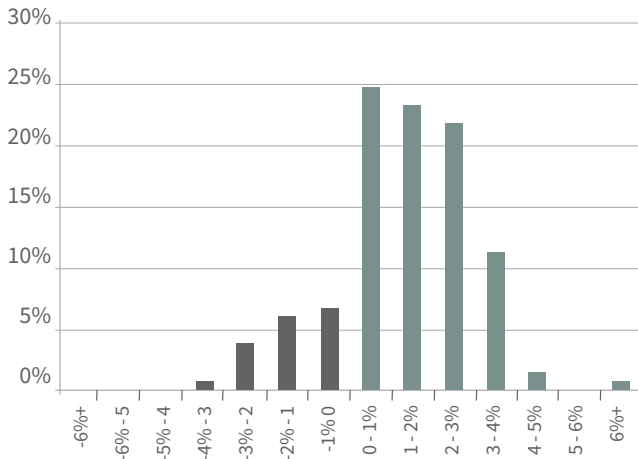


	Jan	Feb	Mar	Apr	May	Jun	Jul	Aug	Sep	Oct	Nov	Dec	YTD
2003							0.9%	0.7%	0.5%	2.0%	2.0%	2.4%	8.8%
2004	1.8%	0.2%	2.0%	0.5%	(1.5%)	0.8%	1.4%	2.2%	1.6%	3.1%	8.2%	2.5%	25.1%
2005	1.1%	3.2%	(0.6%)	1.0%	3.4%	1.0%	1.7%	2.8%	2.8%	0.6%	1.9%	2.3%	23.5%
2006	4.0%	1.1%	2.3%	1.0%	(0.8%)	1.3%	0.4%	1.3%	1.6%	0.9%	1.7%	2.5%	18.6%
2007	2.1%	1.8%	2.9%	1.7%	2.6%	1.3%	(1.4%)	0.7%	2.7%	3.5%	1.7%	1.5%	23.0%
2008	(2.8%)	4.3%	1.6%	2.6%	2.5%	0.6%	(3.1%)	(2.4%)	(2.8%)	(0.5%)	0.5%	0.5%	0.7%
2009	1.3%	0.4%	1.4%	(0.5%)	2.1%	0.4%	2.2%	0.1%	1.5%	2.9%	(0.1%)	2.5%	15.7%
2010	(1.5%)	2.4%	2.6%	0.2%	(2.9%)	(1.4%)	3.5%	(0.2%)	3.7%	0.9%	(1.1%)	0.9%	7.1%
2011	(1.5%)	2.3%	0.7%	2.3%	0.2%	(1.1%)	0.0%	1.1%	(0.4%)	3.5%	3.1%	(1.1%)	9.2%
2012	1.2%	3.2%	2.4%	2.4%	(0.8%)	1.5%	3.3%	2.5%	0.6%	4.0%	2.2%	1.0%	26.1%
2013	0.3%	1.4%	2.8%	1.0%	5.0%	0.4%	1.1%	0.7%	1.0%	3.1%	0.4%	2.6%	21.6%
2014	(2.8%)	3.3%	0.6%	0.5%	3.5%	2.1%	(0.7%)	0.7%					7.4%

HOLLARD STABLE FUND CONTINUED



Frequency distribution of Returns



Statistics

Assets Under Management (R Million)	1,293m
Gross exposure	182%
Net Exposure	48%
% of positive months	83%
% of negative months	17%
Average positive monthly return	1.8%
Average negative monthly return	(1.4%)
Annualised monthly volatility (historic)	5.9%
Sharpe Ratio	1.4
Maximum monthly drawdown	(3.1%)
Maximum cumulative drawdown	(8.7%)

Important Information

Past performance is no guarantee of future returns - values can go up and down. The information contained above has been prepared by Capricorn Fund Managers (Pty) Limited and is unaudited. Returns as shown are the weighted average of all issued series.

CONTACT INFORMATION

Investment Manager

Capricorn Fund Managers (Pty) Limited
 Capricorn House
 32 Impala Rd
 Chislehurst
 2196
 South Africa

For enquiries please contact

Andrew Crawford
T: +27 11 666 0716
E: andrewc@capricornsa.com

Licensed by the Financial Services Board
 License number: 863